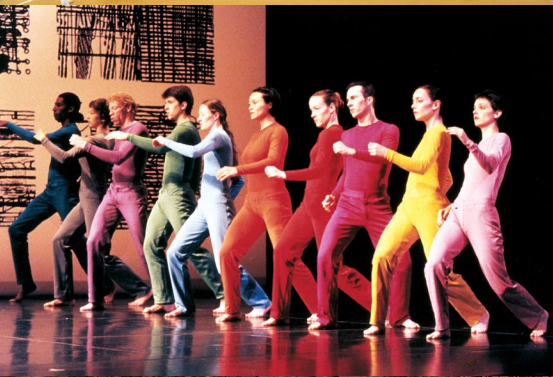


# ||| DURHAM



Photos: Durham Convention & Visitors Bureau

A city of roughly 223,000 people, Durham, originally a tobacco town, lies 250 miles south of Washington, D.C., and within three hours of both the Atlantic Coast and the Appalachian Mountains. Durham and nearby Raleigh and Chapel Hill constitute the three points of the Research Triangle, one of the nation's foremost centers for 140 research-oriented industries and government, research, and regulatory agencies. About 1 million people call the Triangle home. Durham is served by two interstates and is located 20 minutes from Raleigh-Durham International Airport.

Known as the "City of Medicine, USA," healthcare is a leading industry in Durham, including more than 300 medical and health-related companies and medical practices with a combined payroll that exceeds \$1.5 billion annually. Durham is also home to 13 historic sites, 3 art centers, 12 signature annual events with national or regional recognition, along with dozens of other core and celebrated annual events, 6 science and nature centers, and great spectator sports venues.

#### Unique Events...

- ▶ The American Dance Festival: The largest and most influential dance festival in the nation
- ▶ Manbites Dog Theater: Experimental professional theater company
- ▶ Bimbé Cultural Festival: African-American and Caribbean culture and arts—one of the oldest cultural festivals in the country and the region's most comprehensive celebration of art forms and styles
- ▶ Full Frame Film Festival: The only international exclusively documentary film festival
- ▶ Bull Durham Blues Festival: World-class Piedmont blues
- ▶ Durham Bulls: Minor league baseball (as seen in the movie Bull Durham)
- ▶ Duke Children's Classic: One of the oldest celebrity golf tournaments in the nation
- ▶ World Beer Festival: Extremely popular international event featuring more than 300 top breweries

#### Unique Landscape...

- ▶ 98,000 acres of hardwood and evergreen forests including the only remaining old growth Piedmont bottomland forests
- ▶ 7,800 acres of hills and dales, meandering rivers and streams, several lakes
- ▶ 26 rare plant species and several rare species of birds and animals